

RiverSurveyor® S5/M9 Buying Guide



a xylem brand

Base System



RiverSurveyor M9

Dual Janus configuration with four 3.0 MHz and four 1.0 MHz transducers for velocity measurement and one 500 kHz vertical acoustic beam for depth. Includes power/communications cable. Max profile range: 40m



RiverSurveyor S5

Consists of four 3.0 MHz transducers for velocity measurement and one 1.0 MHz vertical acoustic beam for depth. Includes power/communications cable. Max profile range: 5m

Power & Communication Modules



Basic

- Telemetry
- Battery



DGPS

- Telemetry
- Battery
- DGPS



RTK GPS

- Telemetry
- Battery
- RTK/GPS
- Includes RTK Base Station

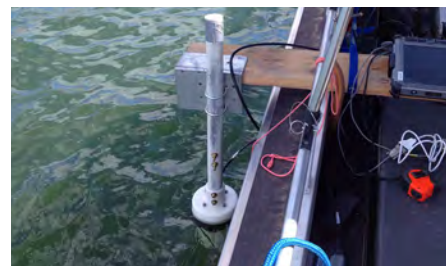
Platforms & Mount



HydroBoard II: Dive resistant design for use in normal or extreme flow conditions.

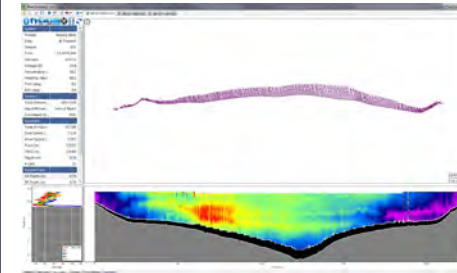


OS Trimaran: Secondary option for floating platform requirements.

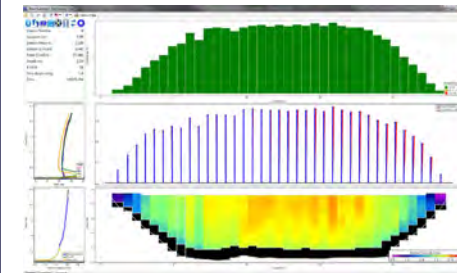


Boat Mount: Delrin/aluminum fixture designed to facilitate mounting over the side of a boat.

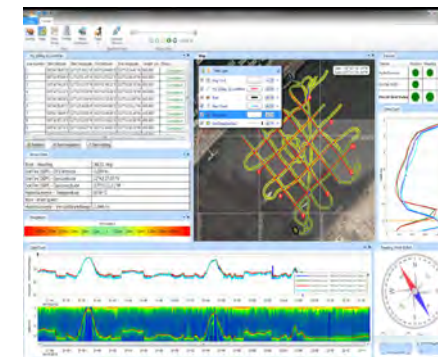
Software



RiverSurveyor LIVE



RiverSurveyor Stationary



HydroSurveyor Upgrade

Options

- Extended warranty
- Communications cable (10, 20, and 30m)
- Handheld display
- Hydroboard II carrying case
- Trimaran carrying case
- Stationary software
- GPS compass

Have a question about your application? Email: inquiry@sontek.com

**RiverSurveyor technology patent number 8,125,849*

sontek.com/riversurveyor